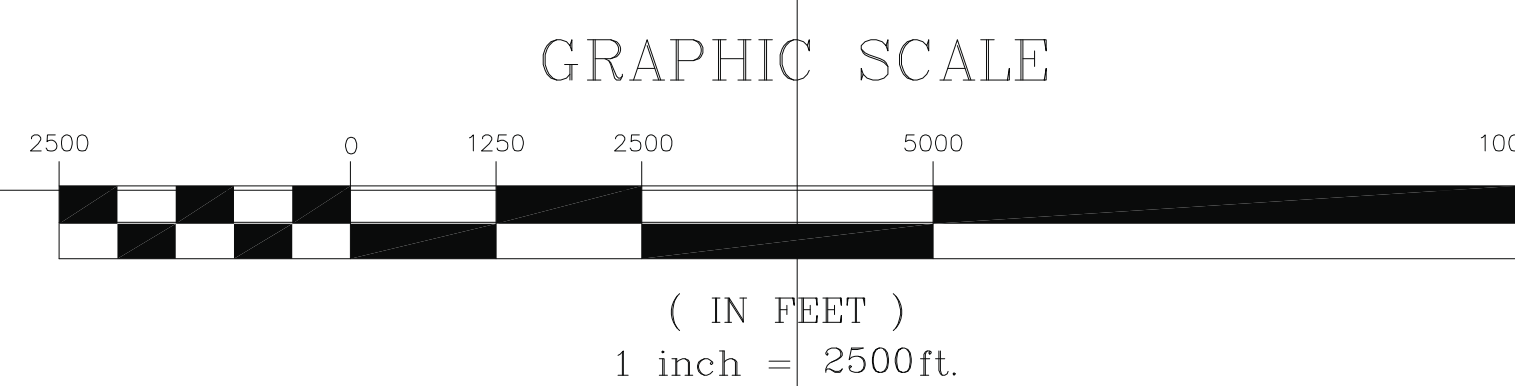


TOWNSHIP OF HOPEWELL MERCER COUNTY - NEW JERSEY

— SHOWING APPROXIMATE LOCATION OF PENNEAST PIPELINE

SEPTEMBER 27, 2014

Paul E. Pogorzelski Township Engineer

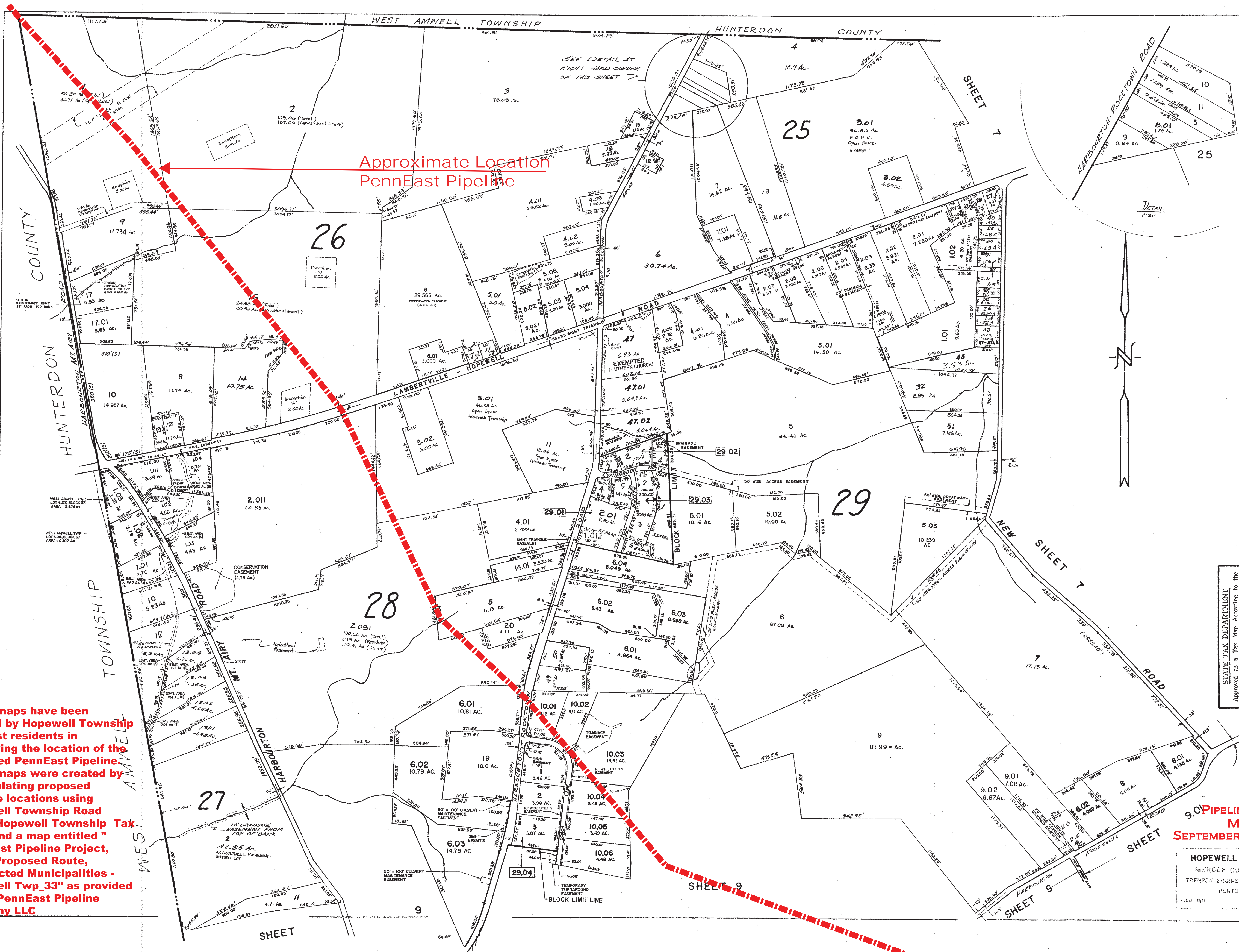


These maps have been created by Hopewell Township to assist residents in identifying the location of the Proposed PennEast Pipeline. These maps were created by extrapolating proposed pipeline locations using Hopewell Township Road Maps, Hopewell Township Tax Maps and a map entitled " PennEast Pipeline Project, Initial Proposed Route, Intersected Municipalities - Hopewell Twp_33" as provided by the PennEast Pipeline Company LLC

THIS MAP IS A GRAPHICAL DEPICTION OF THE PENNEAST PIPELINE LOCATION FOR REFERENCE PURPOSES ONLY. IT IS BASED UPON AN EXTRAPOLATION OF APPROXIMATE PROPOSED PIPELINE LOCATIONS PROVIDED BY THE PENNEAST PIPELINE COMPANY. PENNEAST HAS INDICATED PIPELINE LOCATIONS ARE SUBJECT TO CHANGE

LEGEND

- INTERSTATE HIGHWAY
- STATE HIGHWAY
- COUNTY HIGHWAY
- IMPROVED TOWNSHIP ROAD BITUMINOUS CONCRETE (84.4 MILES)
- IMPROVED TOWNSHIP ROAD OIL & STONE (46.4 MILES)
- IMPROVED TOWNSHIP ROAD GRAVEL (1.9 MILES)
- UNIMPROVED TOWNSHIP ROADS & STREETS
- PennEast Pipeline
- Pipeline Detail Sheet Limit



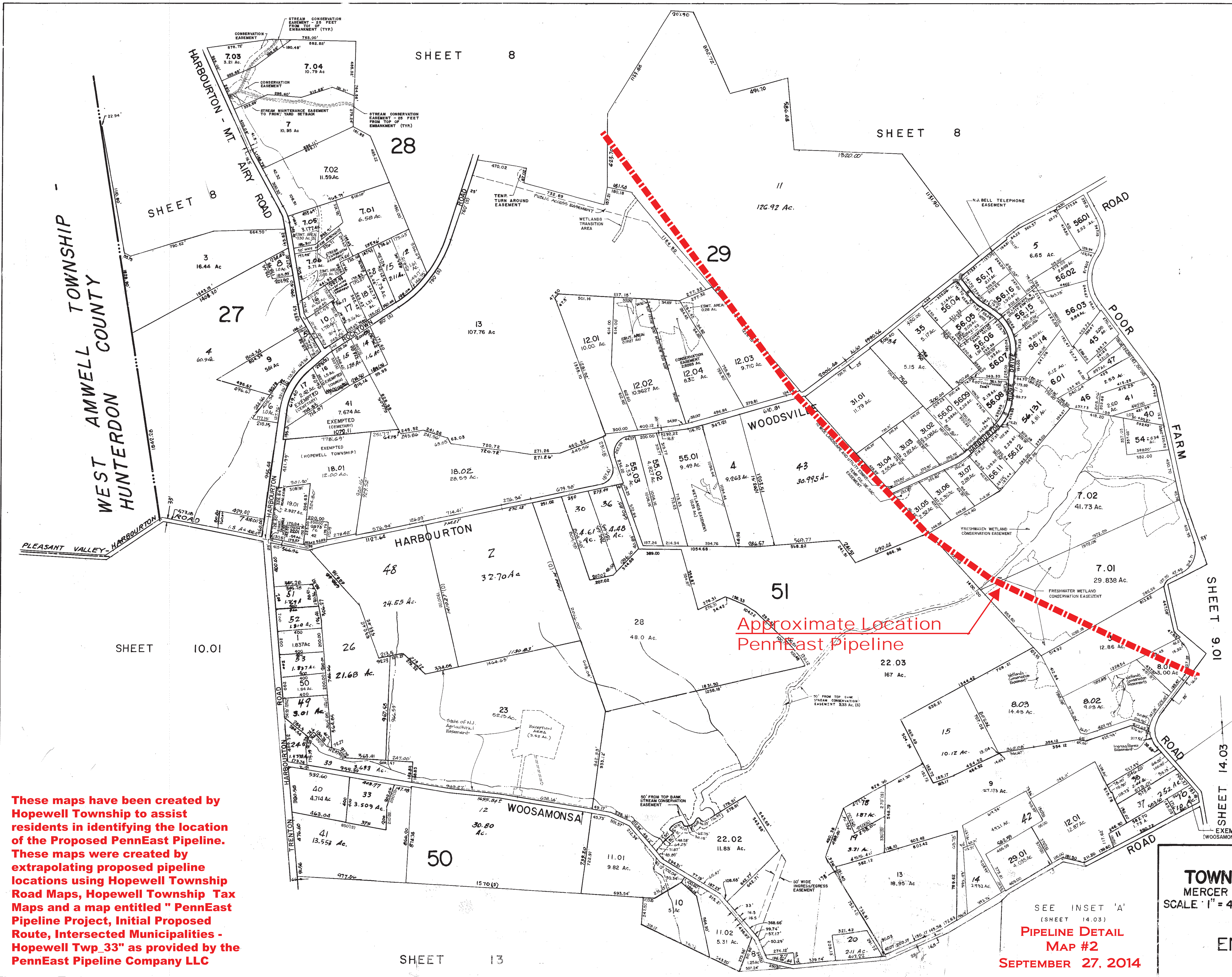
Approximate Location
PennEast Pipeline

These maps have been created by Hopewell Township to assist residents in identifying the location of the Proposed PennEast Pipeline. These maps were created by extrapolating proposed pipeline locations using Hopewell Township Road Maps, Hopewell Township Tax Maps and a map entitled "PennEast Pipeline Project, Initial Proposed Route, Intersected Municipalities - Hopewell Twp 33" as provided by the PennEast Pipeline Company LLC

STATE TAX DEPARTMENT
Approved as to Tax Map according to the Provisions of Chapter 126, Laws of 1914.
WILLIAM D. KELLY
State Tax Commissioner

9.0 PIPELINE DETAIL
MAP #1
SEPTEMBER 27, 2014

HOPEWELL TOWNSHIP
MERCER COUNTY, N.J.
TRENOR ENGINEERING COMPANY
TRENTON, N.J.
SCALE: 1" = 400'



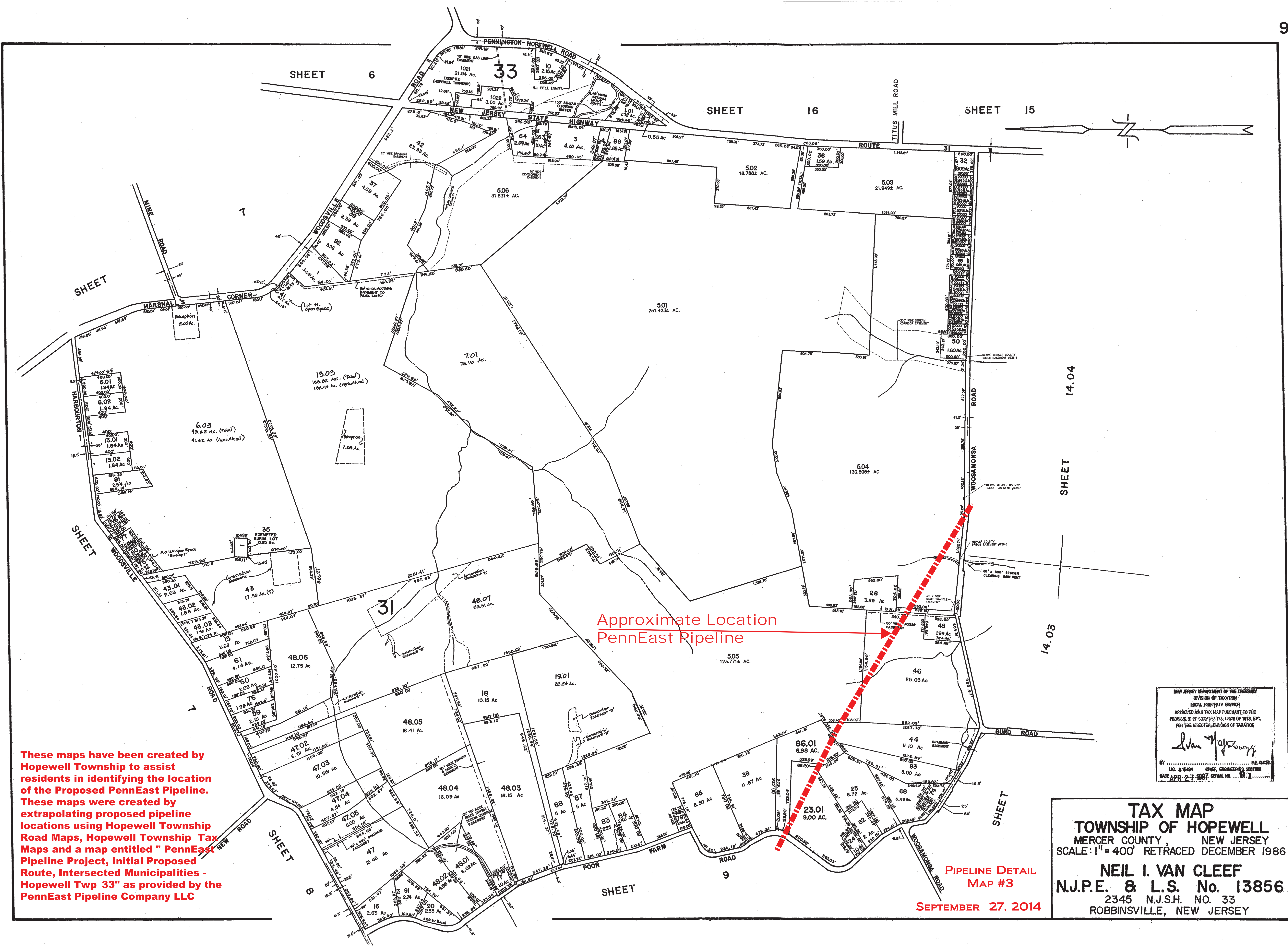
These maps have been created by Hopewell Township to assist residents in identifying the location of the Proposed PennEast Pipeline. These maps were created by extrapolating proposed pipeline locations using Hopewell Township Road Maps, Hopewell Township Tax Maps and a map entitled " PennEast Pipeline Project, Initial Proposed Route, Intersected Municipalities - Hopewell Twp 33" as provided by the PennEast Pipeline Company LLC

NEW JERSEY DEPARTMENT OF THE TREASURY
 DIVISION OF TAXATION
 LOCAL PROPERTY GRANT
 APPROVED AS A TAX MAP PURSUANT TO THE
 PROVISIONS OF CHAPTER 175, LAWS OF 1974, 1975,
 AND 1976 FOR THE DIRECTOR, DIVISION OF TAXATION
Luan H. Johnson
 BY: Luan H. Johnson, CHIEF ENGINEERING SECTION
 APR 27 1987, REVISED NO. 3

TAX MAP
TOWNSHIP OF HOPEWELL
 MERCER COUNTY, NEW JERSEY
 SCALE 1" = 400'
 JULY 1941
TRENTON ENGINEERING CO.
 TRENTON, N. J.

SEE INSET 'A'
 (SHEET 14.03)
PIPELINE DETAIL
MAP #2
SEPTEMBER 27, 2014

EXEMPTED
 (WOOSAMONSA ASSOC)



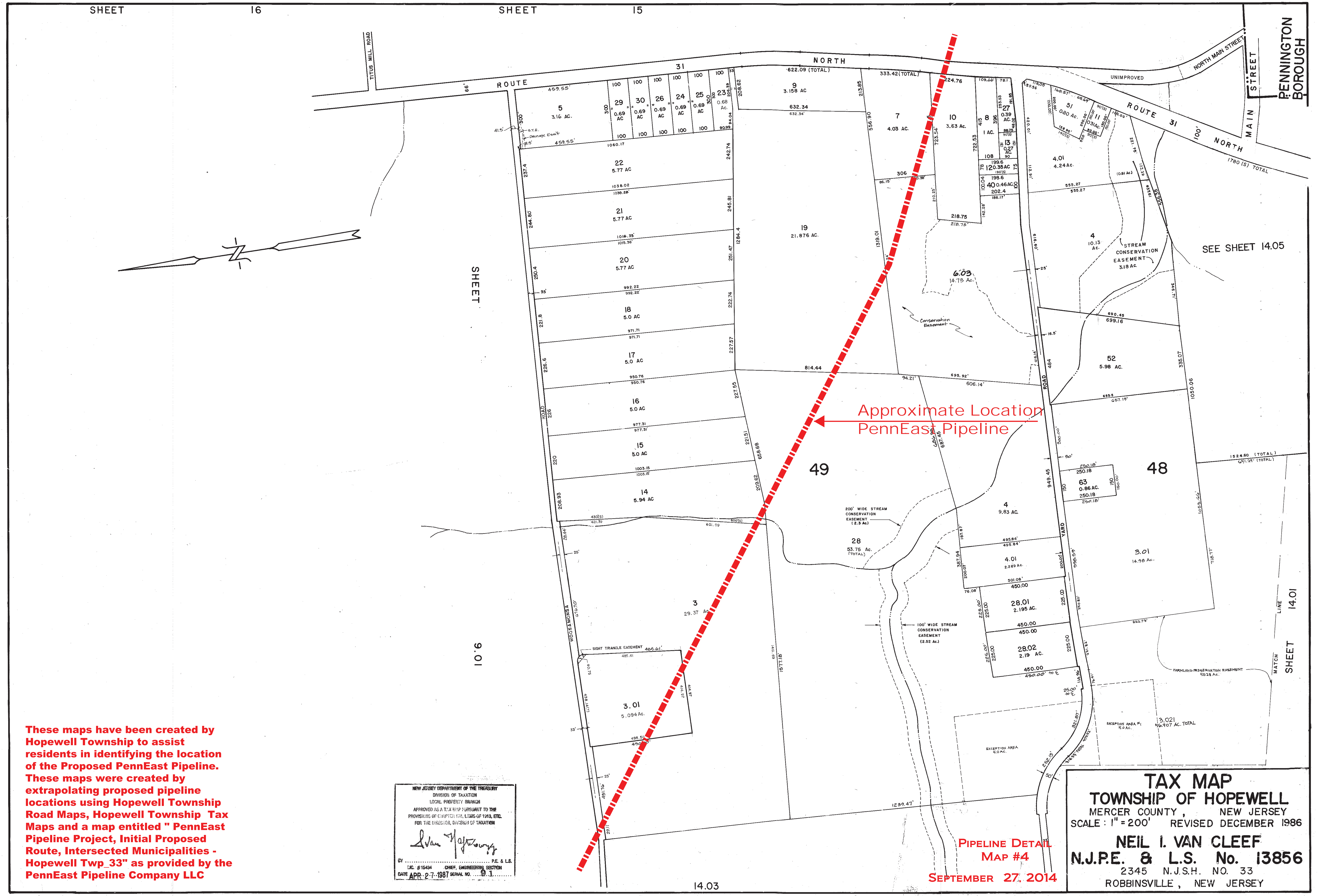
These maps have been created by Hopewell Township to assist residents in identifying the location of the Proposed PennEast Pipeline. These maps were created by extrapolating proposed pipeline locations using Hopewell Township Road Maps, Hopewell Township Tax Maps and a map entitled " PennEast Pipeline Project, Initial Proposed Route, Intersected Municipalities - Hopewell Twp 33" as provided by the PennEast Pipeline Company LLC

Approximate Location PennEast Pipeline

PIPELINE DETAIL MAP #3
SEPTEMBER 27, 2014

NEW JERSEY DEPARTMENT OF THE TREASURY
 DIVISION OF TAXATION
 LOCAL PROPERTY BRANCH
 APPROVED AS A TAX MAP PURSUANT TO THE PROVISIONS OF COMPILER'S LAWS OF 1975, E.P.C. FOR THE DIRECTOR, DIVISION OF TAXATION
Neil I. Van Cleaf
 CHIEF ENGINEERING OFFICER
 DATE APR-27-2014 SERIAL NO. 81

TAX MAP
TOWNSHIP OF HOPEWELL
 MERCER COUNTY, NEW JERSEY
 SCALE: 1" = 400' RETRACED DECEMBER 1986
NEIL I. VAN CLEEF
N.J.P.E. & L.S. No. 13856
 2345 N.J.S.H. NO. 33
 ROBBINSVILLE, NEW JERSEY



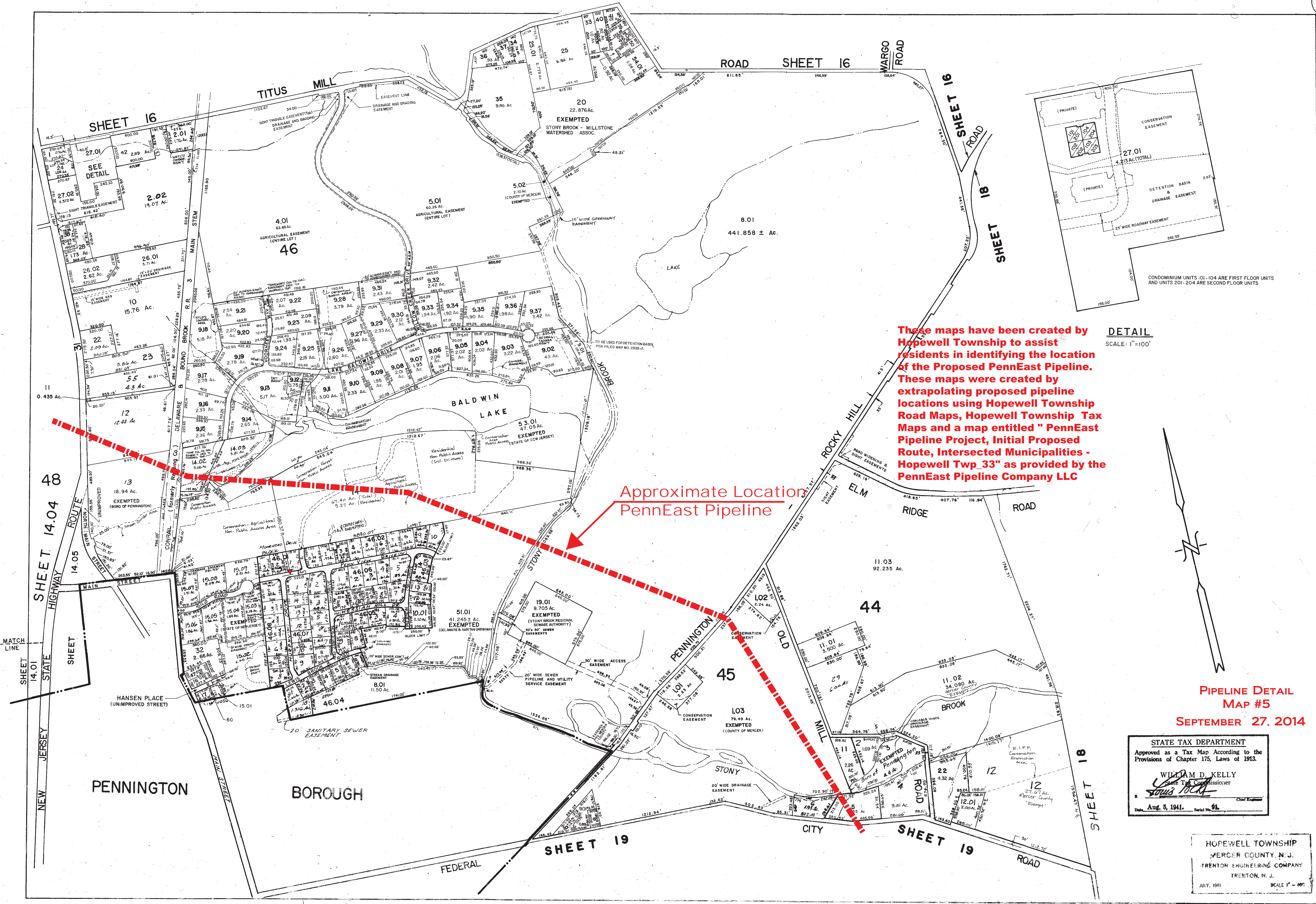
These maps have been created by Hopewell Township to assist residents in identifying the location of the Proposed PennEast Pipeline. These maps were created by extrapolating proposed pipeline locations using Hopewell Township Road Maps, Hopewell Township Tax Maps and a map entitled " PennEast Pipeline Project, Initial Proposed Route, Intersected Municipalities - Hopewell Twp_33" as provided by the PennEast Pipeline Company LLC

NEW JERSEY DEPARTMENT OF THE TREASURY
 DIVISION OF TAXATION
 LOCAL PROPERTY BRANCH
 APPROVED AS A TAX MAP PURSUANT TO THE PROVISIONS OF COMPILATED STATUTES OF 1915, ETC. FOR THE ENGINEER, DIVISION OF TAXATION
Neil I. Van Cleeff
 BY: N.I.C. #15434 CHIEF, ENGINEERING SECTION P.E. & L.S.
 DATE APR. 27-1987 SERIAL NO. 9.1

Approximate Location PennEast Pipeline

PIPELINE DETAIL MAP #4
 SEPTEMBER 27, 2014

TAX MAP
TOWNSHIP OF HOPEWELL
 MERCER COUNTY, NEW JERSEY
 SCALE: 1" = 200' REVISED DECEMBER 1986
NEIL I. VAN CLEEF
N.J.P.E. & L.S. No. 13856
 2345 N.J.S.H. NO. 33
 ROBBINSVILLE, NEW JERSEY



These maps have been created by Hopewell Township to assist residents in identifying the location of the Proposed PennEast Pipeline. These maps were created by extrapolating proposed pipeline locations using Hopewell Township Road Maps, Hopewell Township Tax Maps and a map entitled "PennEast Pipeline Project, Initial Proposed Route, Intersected Municipalities - Hopewell Twp_33" as provided by the PennEast Pipeline Company LLC

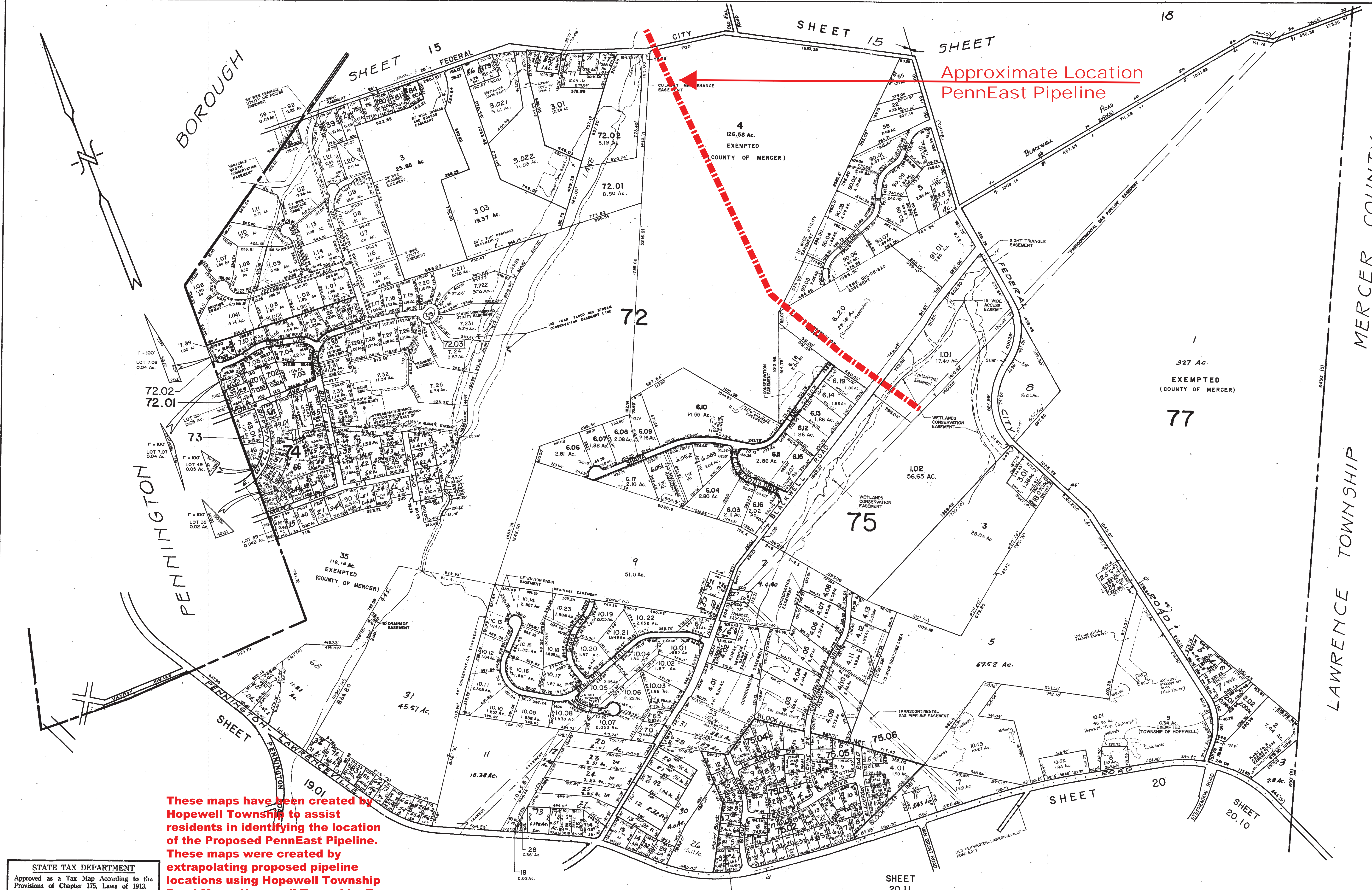
Approximate Location PennEast Pipeline

DETAIL
SCALE: 1"=100'

PIPELINE DETAIL
MAP #5
SEPTEMBER 27, 2014

STATE TAX DEPARTMENT
Approved as a Tax Map According to the Provisions of Chapter 175, Laws of 1913.
WILLIAM D. KELLY
State Tax Commissioner
Date: Aug. 5, 1941. Serial No. 61

HOPEWELL TOWNSHIP
MERCER COUNTY, N.J.
TRENTON ENGINEERING COMPANY
TRENTON, N. J.
JULY, 1941 SCALE 1" = 800'



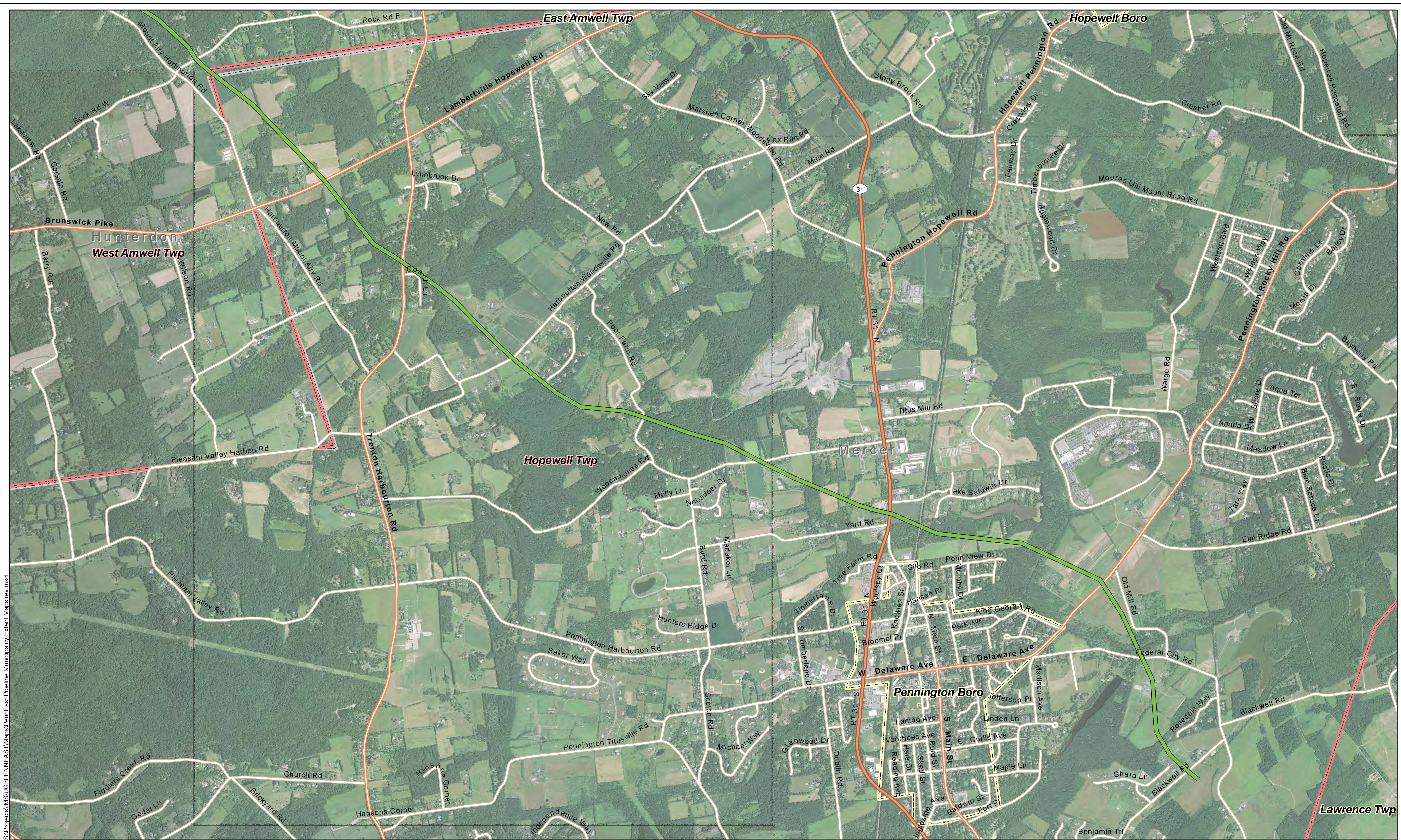
Approximate Location
PennEast Pipeline

These maps have been created by Hopewell Township to assist residents in identifying the location of the Proposed PennEast Pipeline. These maps were created by extrapolating proposed pipeline locations using Hopewell Township Road Maps, Hopewell Township Tax Maps and a map entitled " PennEast Pipeline Project, Initial Proposed Route, Intersected Municipalities - Hopewell Twp 33" as provided by the PennEast Pipeline Company LLC

STATE TAX DEPARTMENT
Approved as a Tax Map According to the Provisions of Chapter 175, Laws of 1913.
WILLIAM D. KELLY
State Tax Commissioner
Date: Aug. 5, 1941, Serial No. 91.

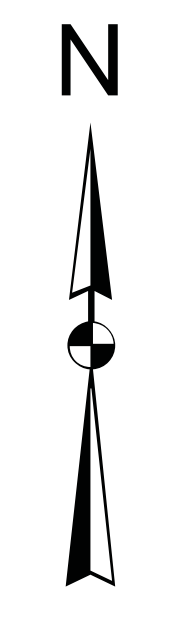
**PIPELINE DETAIL
MAP #6
SEPTEMBER 27, 2014**

HOPEWELL TOWNSHIP
MERCER COUNTY, N. J.
TRENTON ENGINEERING COMPANY
TRENTON, N. J.
JULY, 1941

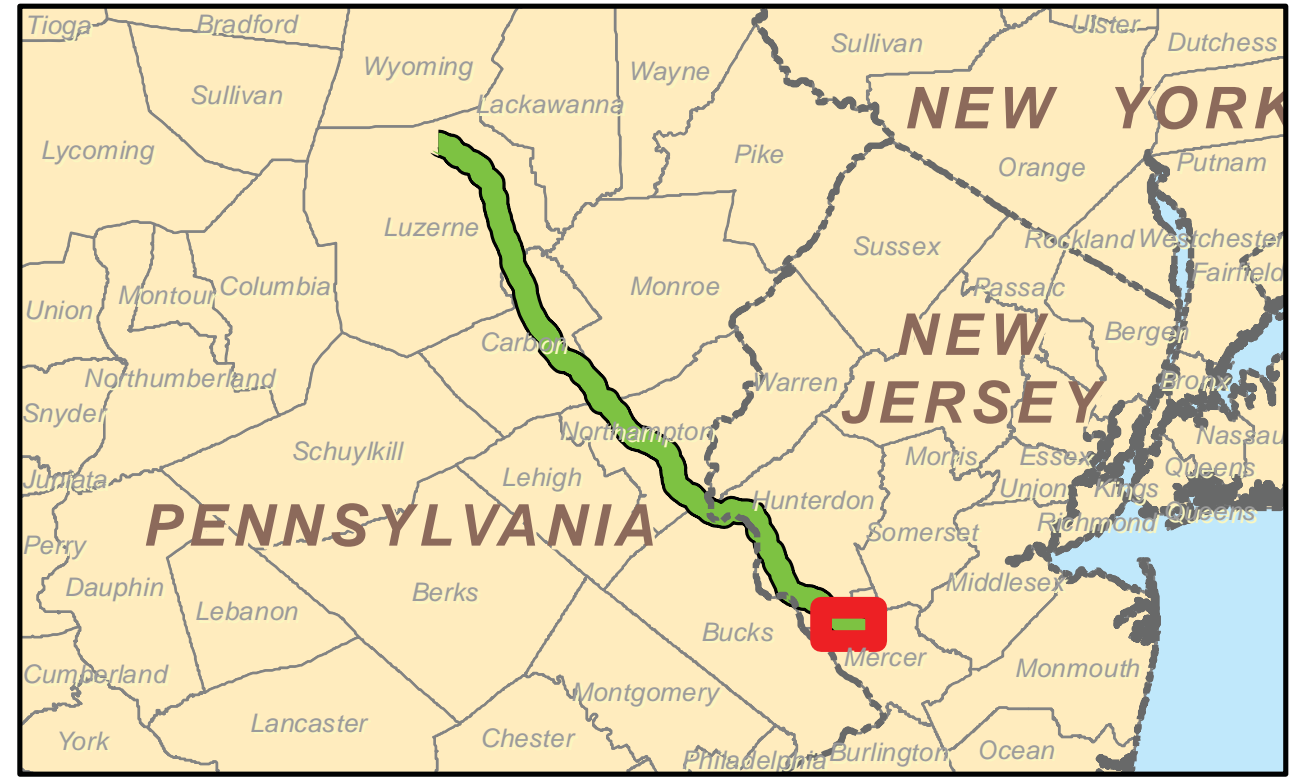


S:\Projects\GIS\GIPENNEAST\Maps\PennEast Pipeline Municipality_Extent_Maps_rev.mxd

Legend
— Proposed Route Intersected Municipalities Municipality Boundary County Boundary



References:
 2013 NAIP Imagery
 ESRI Streets 2012
 PA Municipalities 2013
 NJ Municipalities 2013
 NAD 1983 UTM Zone 18N
 Projection: Transverse Mercator
 Linear Unit: Meter (1.0)
 Key Map Not Drawn to Scale



TITLE: PennEast Pipeline Project Initial Proposed Route Intersected Municipalities - Hopewell Twp_33			
LOC:			REV.:
CKD. BY: BH	ENG.:	Date: 8/19/2014	W.O.:
DRN. BY: VP	SCALE:	DWG. NO.:	

